

The *Aspenwood*



A Quick Possession *Opportunity*

Priced at

\$1,199,900*

*Price subject to change without notice.
Plus applicable taxes. E&OE.

1-598

Benmore Place

▾ SAGE WATER



Home features *we think you'll love*

- Designer selected bold colour scheme
- Kitchen, dining room, living room, as well as primary bedroom with ensuite and walk-in closet on main level
- Brushed nickel fixture package
- Two-tone cabinetry with quartz countertops
- Butler's pantry
- Private office / den
- Covered deck and patio
- 5-piece ensuite, including freestanding tub
- Basement rec room
- Wet bar rough-in in basement

Property
Summary

Property type | Single family

Title | Freehold (no lease)

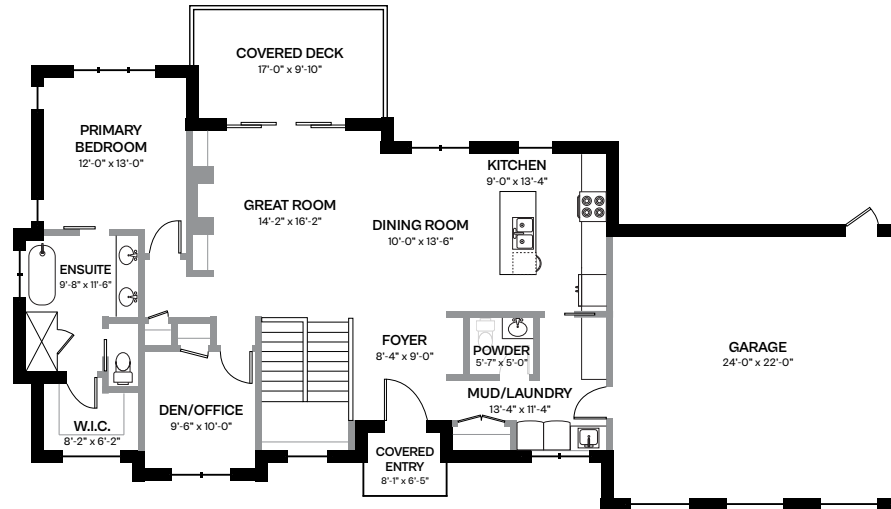
Neighbourhood | Sage Water

Parking | Double car garage

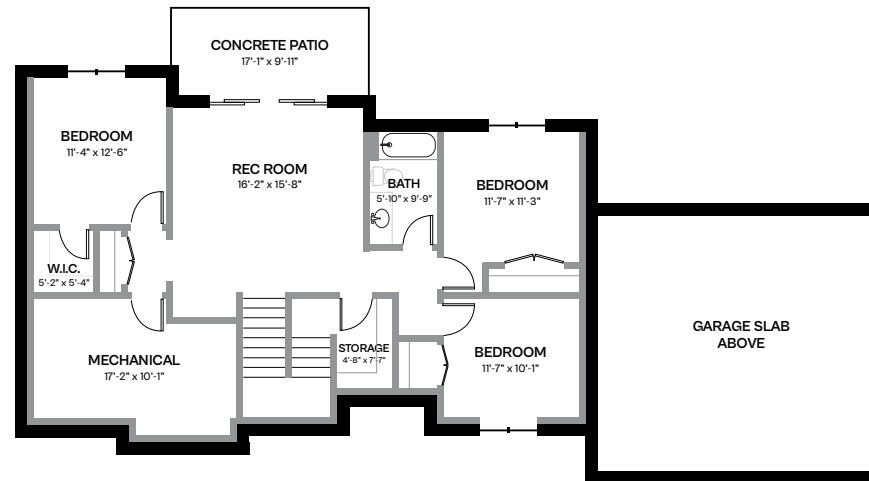
Bedrooms | 4 + Den

Bathrooms | 2.5

MAIN LEVEL



LOWER LEVEL



Main Level | 1395 sq ft Lower Level | 1000 sq ft Total | 2395 sq ft

In a continuing effort to improve our product offering, we reserve the right to modify or change the floor plans and specifications without notice. Floor plans are conceptual marketing drawings only. All dimensions and sizes are approximate. E&OE.



Taryn Tymofichuk

250-258-9838

ttymofichuk@emilanderson.ca