



SHORERISE LUXURY VILLAS

VILLA 1 | FLOOR PLAN A

(LEFT SIDE)

Features

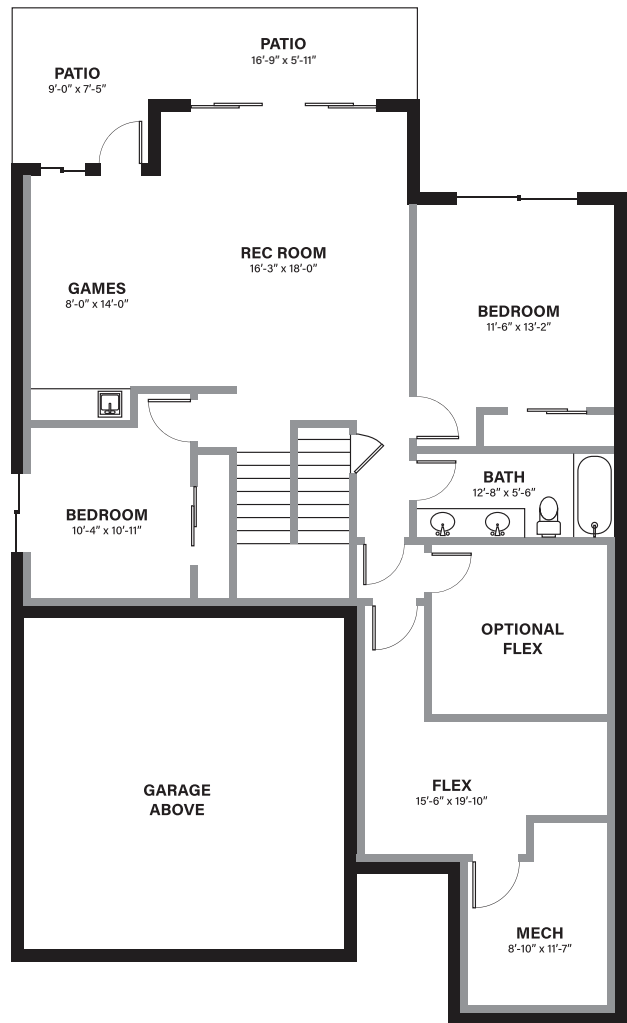
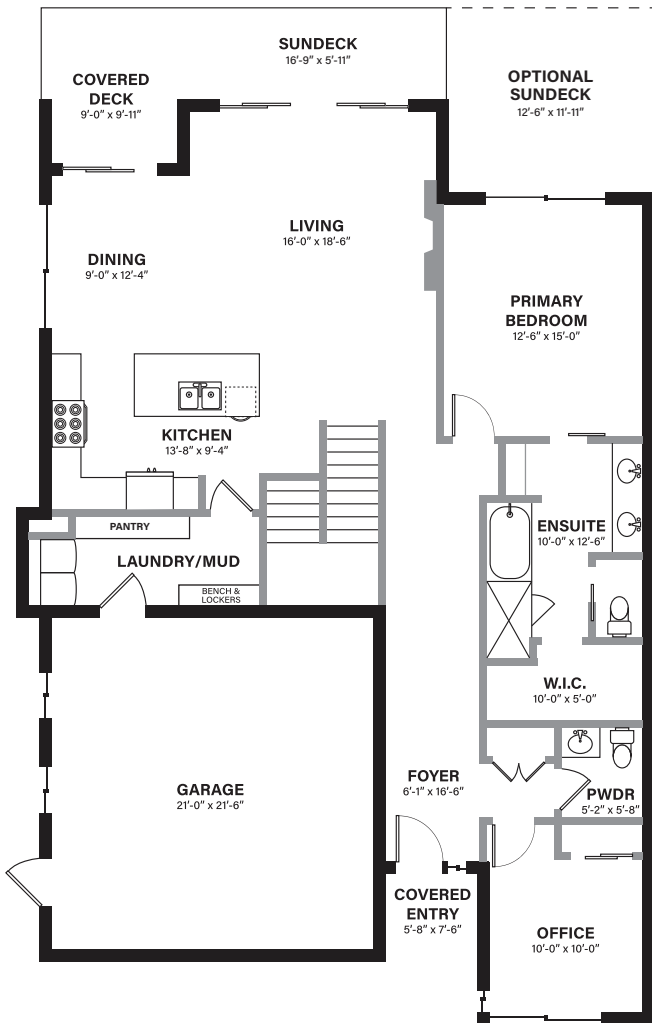
3 BEDROOM | 2.5 BATHROOM

MAIN LEVEL 1570 SQ. FT. | WALK-OUT LEVEL 1358 SQ. FT.

LIVING SPACE | 2928 SQ. FT.

MAIN LEVEL

WALK-OUT LEVEL



In a continuing effort to improve our product, we reserve the right to modify or change the plans and specifications without notice. Floor plans are conceptual marketing drawings only. All dimensions and sizes are approximate. E&OE.

Shorerise LUXURY VILLA

OPTIONS & Upgrades

Villa 31-A | Bold Scheme, Black Fixtures

ITEM	DESCRIPTION	COST
Wet Bar	Cabinetry, bar sink, pull down faucet, quartz countertops, tile backsplash, floating shelves & undermount puck lighting.	\$11,000
Luxury Vinyl Plank 01	Upgrade from carpet to luxury vinyl plank in primary bedroom and WIC.	\$870
Luxury Vinyl Plank 02	Upgrade from carpet to luxury vinyl plank on stairs.	\$3,560
Luxury Vinyl Plank 03	Upgrade from carpet to luxury vinyl plank in lower level bedroom #2.	\$710
Luxury Vinyl Plank 04	Upgrade from carpet to luxury vinyl plank in lower level bedroom #3.	\$540
Fireplace 01	Upgrade from drywall to half tile finish.	\$1,730

ITEM	DESCRIPTION	COST
Ceiling Fan 01	Upgrade to interior ceiling fan in the great room.	\$880
Ceiling Fan 02	Upgrade to interior ceiling fan in the primary bedroom.	\$880
Outdoor Ceiling Fan	Deck fan and switch on rear upper deck.	\$710
Glass Panel Railing	Upgrade from square spindles to glass panels with clips.	\$3,750
Extended Sundeck	An extended sundeck off of the primary bedroom.	\$17,200

In a continuing effort to improve our product, Dilworth Homes reserves the right to modify or change our specifications and pricing without notice. E&OE.