

KUIPERS PEAK

UNIT 24 - 796 KUIPERS CRESCENT

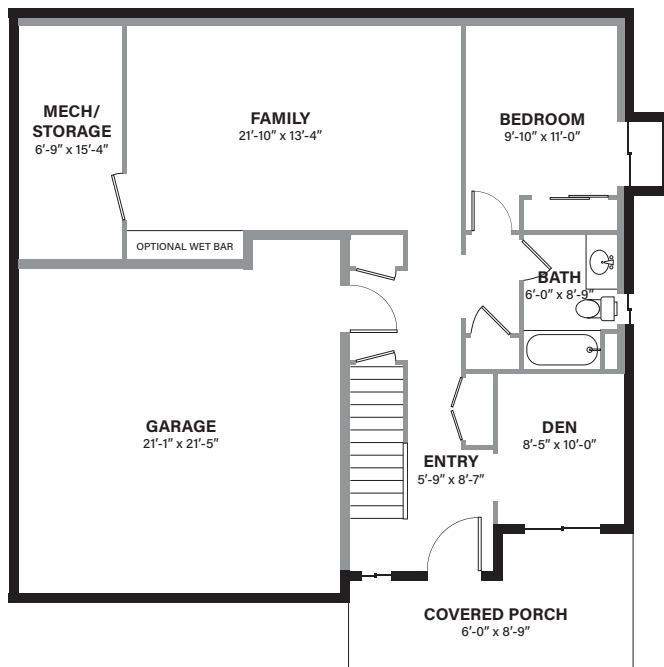
3 BEDROOM | 3 BATHROOM

MAIN LEVEL 863 SQ FT | UPPER LEVEL 1483 SQ FT

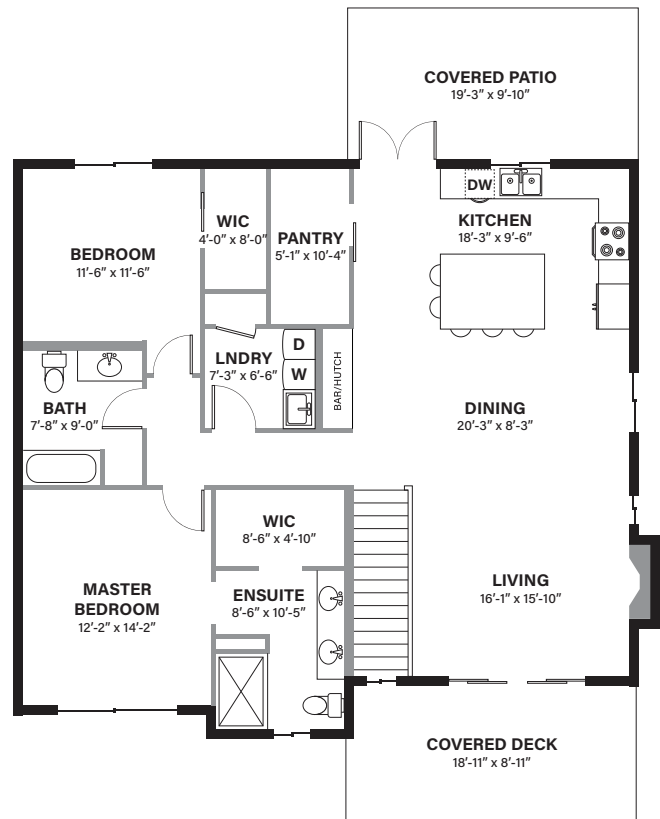
LIVING SPACE | 2346 SQ FT



MAIN LEVEL



UPPER LEVEL



In a continuing effort to improve our product, we reserve the right to modify or change the plans and specifications without notice. Floor plans and renderings are conceptual marketing drawings only. All dimensions and sizes are approximate. E&OE.

CONTACT TARYN TYMOFICHUK | 250-258-9838 | ttymofichuk@emilanderson.ca