

The Kingfisher



A QUICK POSSESSION OPPORTUNITY

PRICED AT

\$1,269,900*

*PRICE SUBJECT TO CHANGE WITHOUT NOTICE.
PLUS APPLICABLE TAXES. E&OE.

2054

KENTUCKY CRESCENT
AT TOWER RANCH



PROPERTY SUMMARY

Property Type | Single Family Title | Freehold (No Lease)

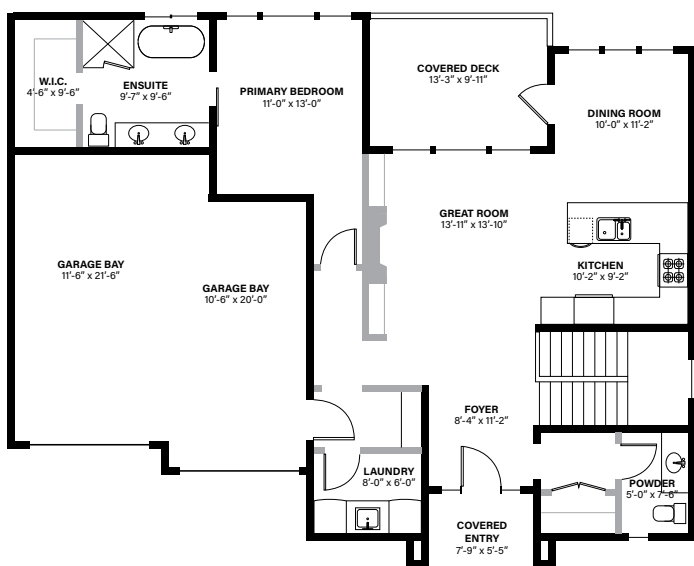
Neighbourhood | Tower Ranch Parking | Double Car Garage

Bedrooms | 4 Bathrooms | 4.5

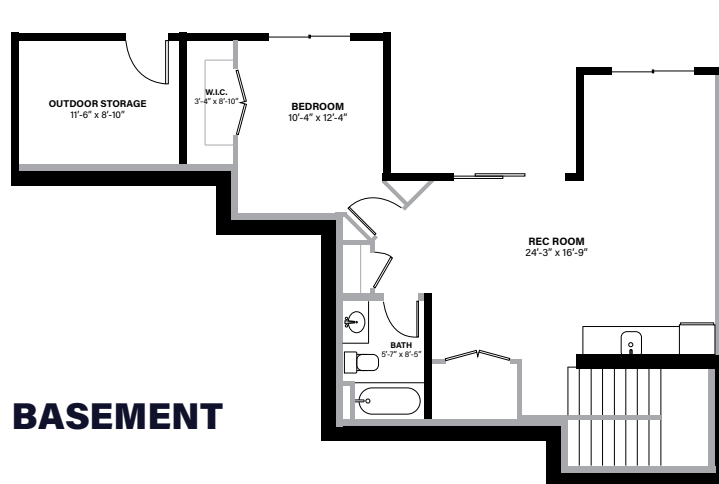
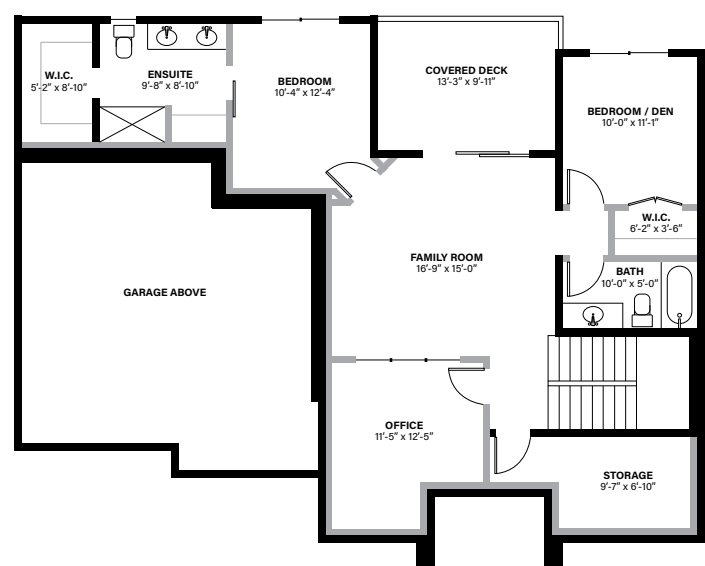
HOME FEATURES WE THINK YOU'LL LOVE

- Designer-inspired light colour scheme
- Kitchen, dining room, living room, as well as primary bedroom with ensuite and walk-in closet on main level
- Brushed nickel fixture package
- Two-tone cabinetry with kitchen cabinets to ceiling and quartz countertops
- Covered decks and patio
- 5-piece ensuite, including freestanding tub
- Heated tile floor in ensuite
- Toe-kick lighting in ensuites
- Basement rec room
- Built-in wet bar in basement
- Outdoor storage
- Main floor doors are 8'
- EV car charger rough-in

MAIN LEVEL



LOWER LEVEL



MAIN LEVEL | 1217 SQ. FT. LOWER LEVEL | 1005 SQ. FT. BASEMENT | 720 SQ. FT. TOTAL | 2942 TOTAL SQ. FT.

In a continuing effort to improve our product offering, we reserve the right to modify or change the floor plans and specifications without notice. Floor plans are conceptual marketing drawings only. All dimensions and sizes are approximate. E&OE.



TARYN TYMOFICHUCK

250-258-9838

ttymofichuck@emilanderson.ca