

The Heron



A QUICK POSSESSION OPPORTUNITY

PRICED AT

\$1,299,900*

*PRICE SUBJECT TO CHANGE WITHOUT NOTICE.
PLUS APPLICABLE TAXES, E&OE.

2060

KENTUCKY CRESCENT
AT TOWER RANCH



PROPERTY SUMMARY

Property Type | Single Family Title | Freehold (No Lease)

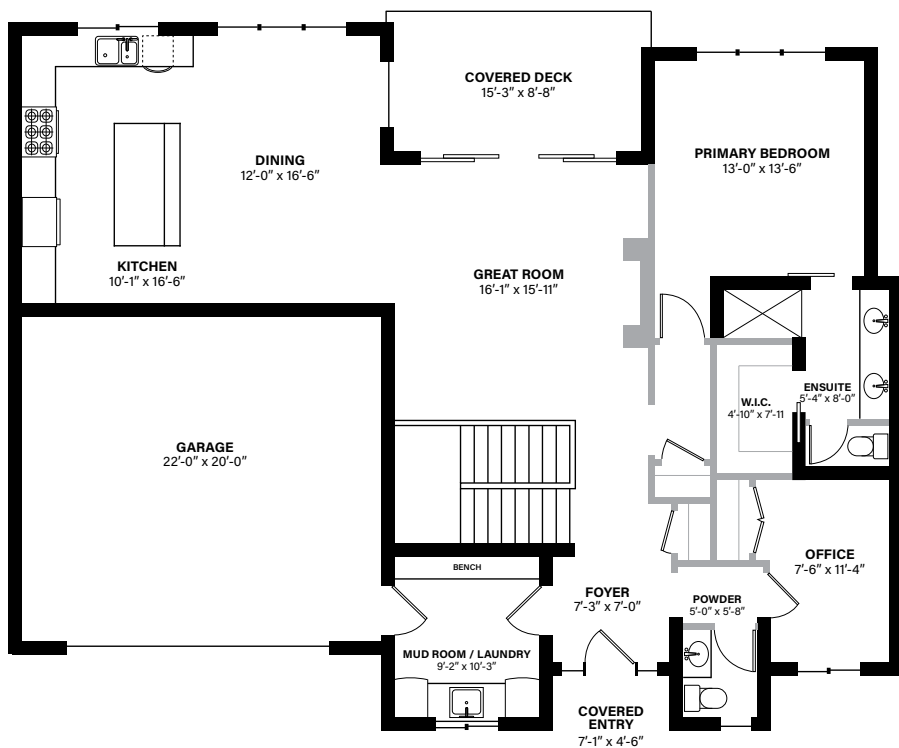
Neighbourhood | Tower Ranch Parking | Double Car Garage

Bedrooms | 3 Bathrooms | 2.5

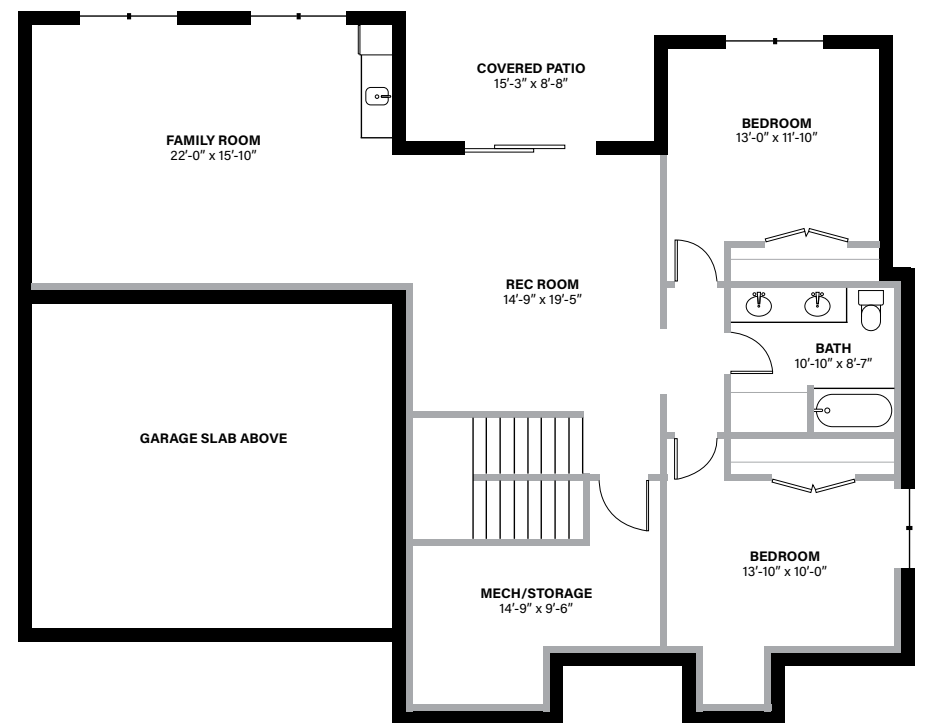
HOME FEATURES WE THINK YOU'LL LOVE

- Designer-inspired bold colour scheme
- Kitchen, dining room, living room, as well as primary bedroom with ensuite and walk-in closet on main level
- Brushed nickel fixture package
- Two-tone cabinetry with kitchen cabinets to ceiling and quartz countertops
- Private office / den
- Covered deck and patio
- Lower level rec room
- Built-in wet bar
- Main floor doors are 8'
- Heated tile floor in ensuite
- Toe-kick lighting in ensuite
- Built-in mudroom bench and lockers
- EV car charger rough-in

MAIN LEVEL



LOWER LEVEL



MAIN LEVEL | 1526 SQ. FT. LOWER LEVEL | 1266 SQ. FT. TOTAL | 2792 TOTAL SQ. FT.

In a continuing effort to improve our product offering, we reserve the right to modify or change the floor plans and specifications without notice. Floor plans are conceptual marketing drawings only. All dimensions and sizes are approximate. E&OE.



TARYN TYMOFICHUCK

250-258-9838

ttymofichuck@emilanderson.ca