

# The Kestrel



A QUICK POSSESSION OPPORTUNITY

**COMING SOON**

**2042**

KENTUCKY CRESCENT  
AT TOWER RANCH





# PROPERTY SUMMARY

Property Type | Single Family Title | Freehold (No Lease)

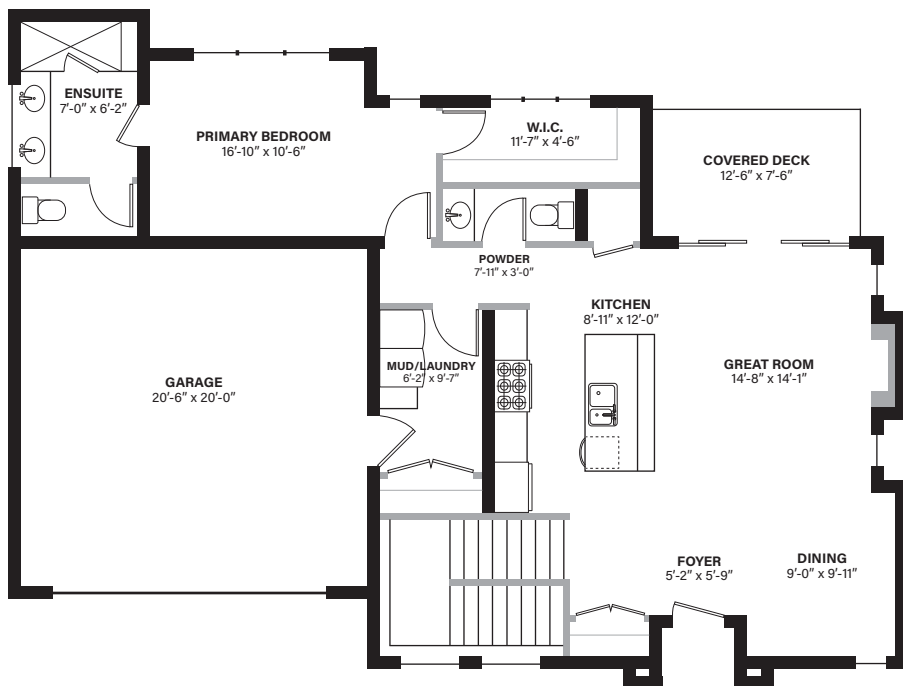
Neighbourhood | Tower Ranch Parking | Double Car Garage

Bedrooms | 3 Bathrooms | 2.5

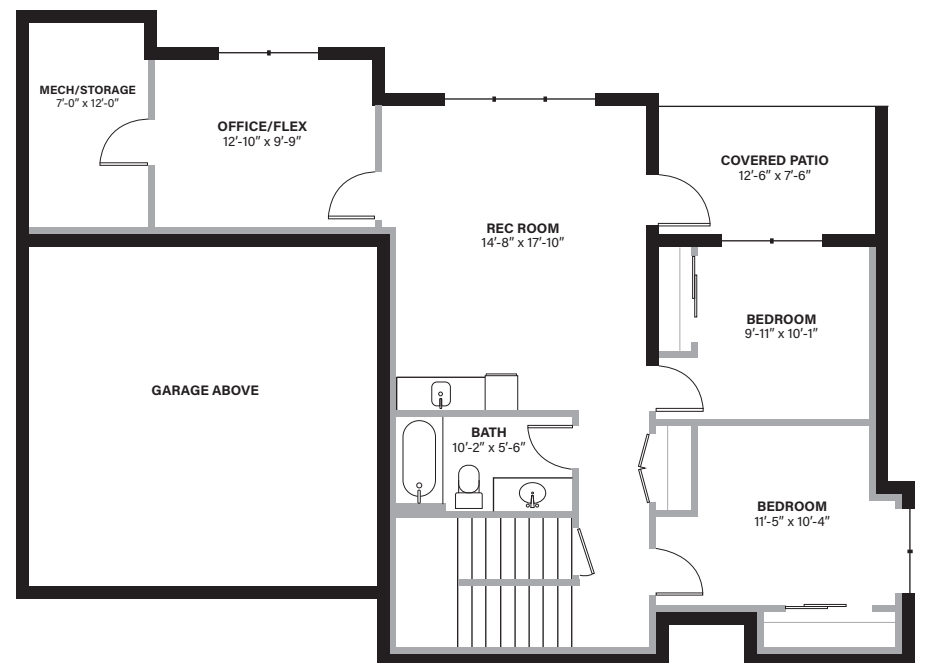
## HOME FEATURES WE THINK YOU'LL LOVE

- Designer-inspired bold colour scheme
- Kitchen, dining room, living room, as well as primary bedroom with ensuite and walk-in closet on main level
- Brushed nickel fixture package
- Two-tone cabinetry with kitchen cabinets to ceiling and quartz countertops
- Silgranit sink in kitchen
- Private office / den
- Covered deck and patio
- Lower level rec room
- Main floor doors are 8'
- Heated tile floor in ensuite
- Toe-kick lighting in all bathrooms
- Built-in wet bar on lower level
- EV car charger rough-in

### MAIN LEVEL



### LOWER LEVEL



MAIN LEVEL | 1154 SQ. FT. LOWER LEVEL | 943 SQ. FT. TOTAL | 2097 TOTAL SQ. FT.

In a continuing effort to improve our product offering, we reserve the right to modify or change the floor plans and specifications without notice. Floor plans are conceptual marketing drawings only. All dimensions and sizes are approximate. E&OE.



TARYN TYMOFICHUCK

250-258-9838

[ttymofichuck@emilanderson.ca](mailto:ttymofichuck@emilanderson.ca)