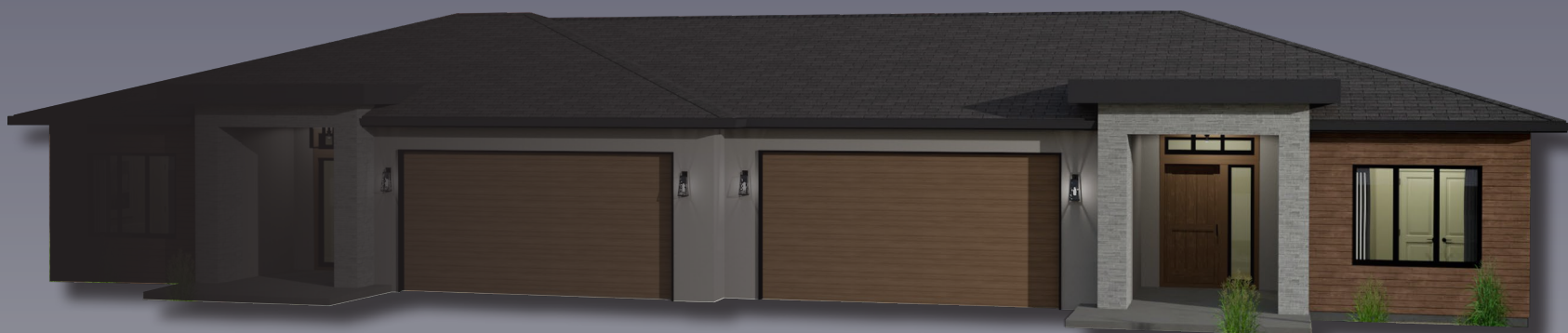


The Pendrell



A CUSTOM QUICK POSSESSION OPPORTUNITY

PRICED AT **\$1,099,900***

*BASE PRICE DOES NOT INCLUDE UPGRADES. PRICE SUBJECT TO CHANGE WITHOUT NOTICE. PLUS APPLICABLE TAXES. E&OE.

13-796
KUIPERS CRESCENT
AT KUIPERS PEAK





KUIPERS PEAK

AT SOUTH RIDGE

Upscale townhomes in the Upper Mission.

Nestled into the mountain hillside of Kelowna's Upper Mission neighbourhood, Kuipers Peak at South Ridge promises spectacular views of the surrounding mountains and Okanagan Lake below. Here, you can enjoy sunsplashed days spent hiking, biking, trail running or strolling along the shoreline below, paired with the most spectacular evening sunsets that the Okanagan has to offer.

CLOSE TO EVERYWHERE YOU WANT TO BE.



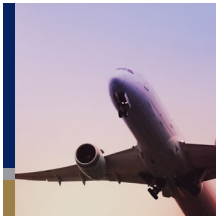
Stunning Views

Pearched high in the hills of Kelowna's Upper Mission, Kuipers peak is a boutique community that offers breath-taking views of the mountains, lake, and city below.



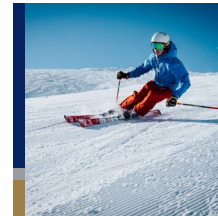
Shopping & Dining

Kuipers Peak is conveniently located within a short drive to nearby shopping areas and restaurants.



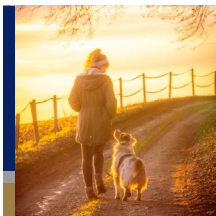
Proximity

Perfectly positioned for convenient access to key shopping and dining hubs, parks and schools, UBCO and the Kelowna International Airport.



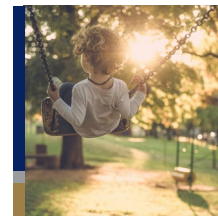
Four Season Activities

From the downhill slopes, cross-country skiing, and snowshoeing, to golf and lake life in the summer, there are great ways to enjoy the outdoors, all year round.



Kuipers Peak Mountain Park

With beautiful views of the valley, Kuipers Peak Mountain Park is just steps away from the community below, providing ample room for outdoor activity.



Schools & Parks

At Kuipers Peak, the proximity to both elementary, middle and high schools, as well as parks and greenspace is attractive to growing families.



Wineries & Vineyards

At Kuipers Peak, wine connoisseurs won't be disappointed by the selection available in their own backyard.



Neighbourhood Growth

With the addition of a ring road linking the Upper Mission to central Kelowna, and a commercial hub under development just down the road, accessing all the essentials is easy at Kuipers Peak.

PROPERTY SUMMARY

Property Type | Townhome

Title | Strata

Neighbourhood | Kuipers Peak

Parking | Garage & Driveway

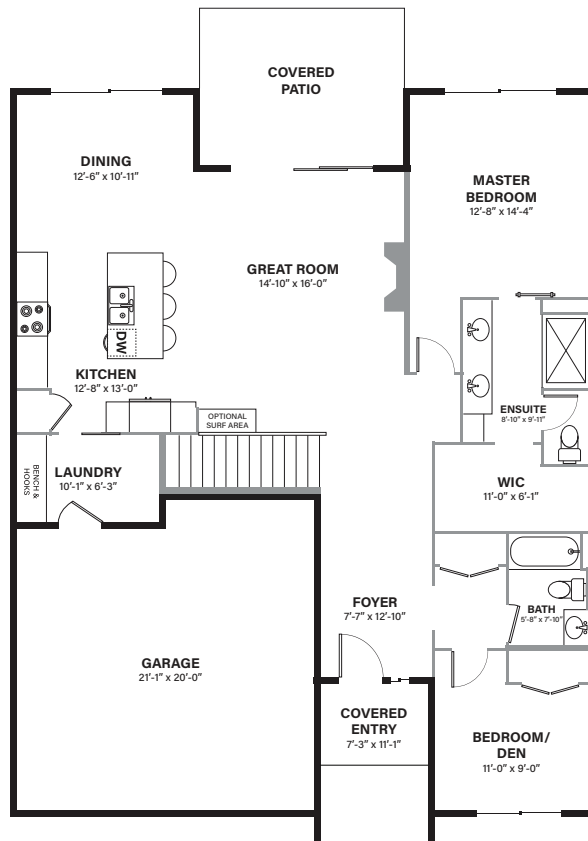
Bedrooms | 3+

Bathrooms | 3

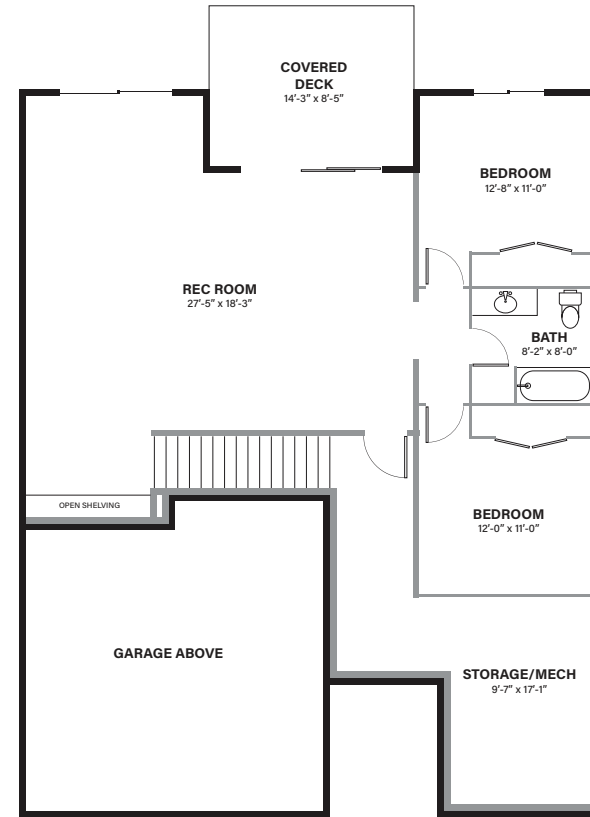
HOME FEATURES WE THINK YOU'LL LOVE

- Designer-inspired finishings and upgrades to customize your home
- Beautiful views of the lake, mountains, and city below
- Main level living featuring the great room, kitchen, master bedroom, ensuite bathroom, and powder room
- Main level laundry
- Two-tone cabinetry
- L-shaped kitchen with island and pantry
- Luxurious 4-piece ensuite
- Covered patio & covered deck
- Rough in for gas BBQ
- Built in mudroom bench
- Open shelving in the lower level

BUNGALOW WALK-OUT IN THE HEART OF THE OKANAGAN



Main Level



Walk-Out Level

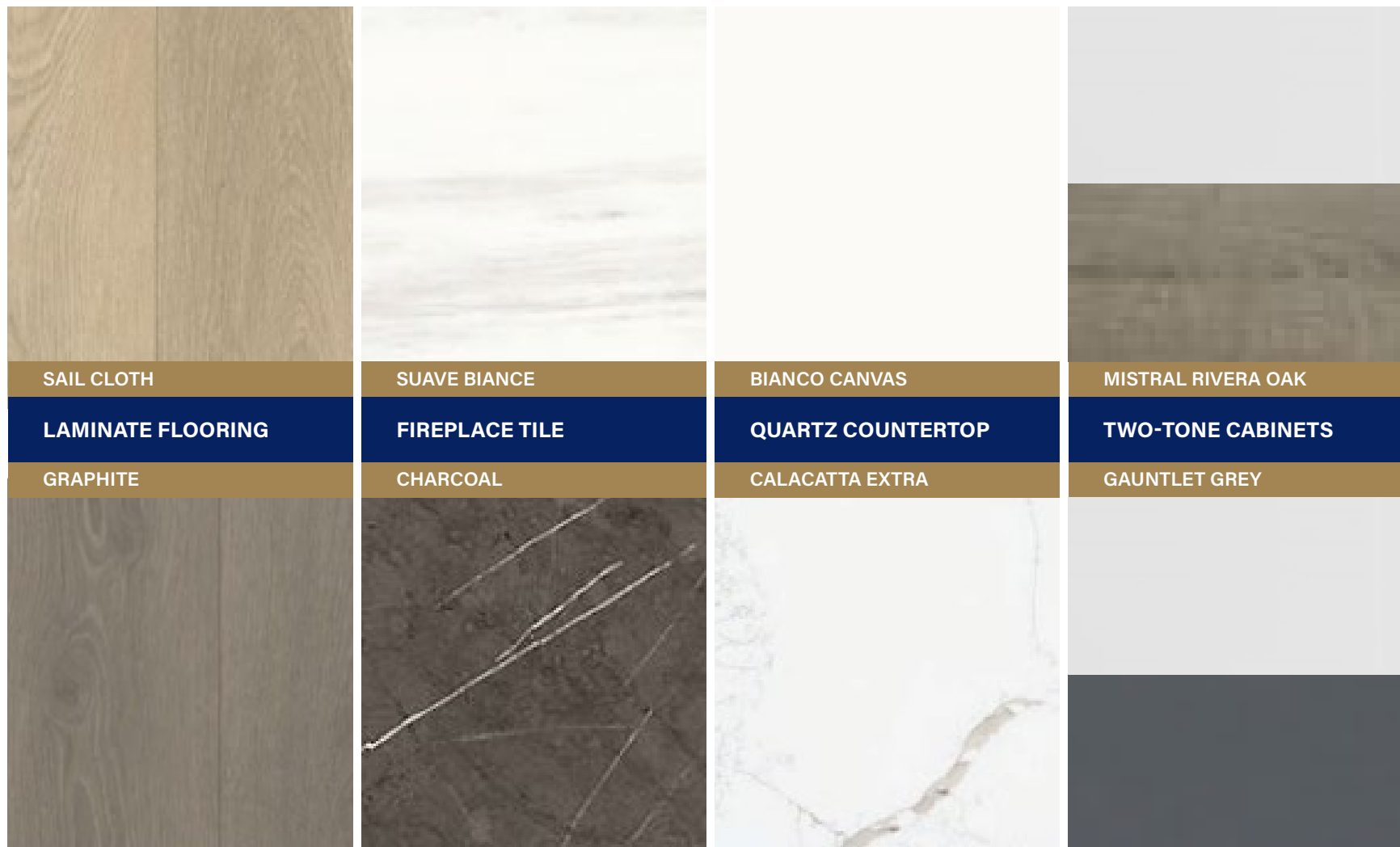
MAIN LEVEL | 1541 SQ. FT.

WALK-OUT LEVEL | 1142 SQ. FT.

TOTAL | 2683 TOTAL SQ. FT.

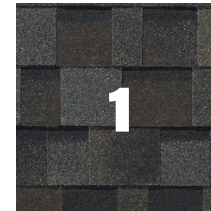
In a continuing effort to improve our product offering, we reserve the right to modify or change the floor plans and specifications without notice. Floor plans are conceptual marketing drawings only. All dimensions and sizes are approximate. E&OE.

THIS OR THAT? PERSONALIZE YOUR INTERIOR FINISH



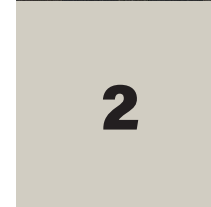
Samples shown are representational, for marketing purposes only. We reserve the right to modify and change specifications without notice. E&OE.

EXTERIOR SELECTIONS INSPIRED BY THE LAND



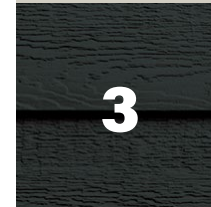
1

IKO Dynasty Shingles
"Glacier"



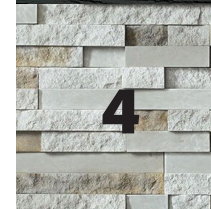
2

Sherwin Williams
"Agreeable Grey"



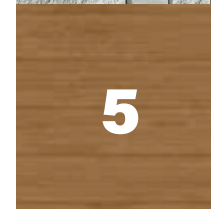
3

Fascia Smart Trim LP
"Abyss Black"



4

Pro-Fit Terrain Ledgestone
"Ethos"



5

Steel Craft Contemporary
"Cedar"



**SALES AMBASSADOR
CHRISTY SHAUGHNESSY**

250-258-7608

kuiperspeak@dilworth.ca