



An Express Home Opportunity

PRICED AT **\$1,239,900***

*Price subject to change without notice. Plus applicable taxes. E&OE.

THE Trinity
2169 Kentucky Crescent



TOWER RANCH

The view is forever. The opportunity is now.

Nestled in the rolling hills of the Ellison Bench and Tower Ranch Mountain Park, neighbouring an award-winning 18-hole golf course, Tower Ranch is a community where environmental stewardship and manicured greens, parks, and pathways find common ground.

Close to everywhere you want to be.



Panoramic Views

Perched above the Kelowna cityscape, Tower Ranch is a destination community that offers sun-splashed views of the mountains, lake and golf course greens below.



Shopping & Dining

Tower Ranch is conveniently located within a short drive to nearby shopping areas and restaurants.



Proximity

Perfectly positioned for convenient access to key shopping and dining hubs, parks and schools, UBCO and the Kelowna International Airport.



Four Season Activities

From the downhill slopes, cross-country skiing, and snowshoeing, to golf and lake life in the summer, there are great ways to enjoy the outdoors, all year round.



Tower Ranch Mountain Park

Nestled into the hills of Tower Ranch Mountain Park and 42 acres of preserved treed green space, Tower Ranch provides a gateway to the great outdoors.



Schools & Parks

In Tower Ranch, the proximity to both elementary, middle and high schools, as well as parks and greenspace is attractive to growing families.



Wineries & Vineyards

At Tower Ranch, wine connoisseurs won't be disappointed by the selection available in their own backyard.



Tower Ranch Community Association

As a member of the Tower Ranch Community Association, Homeowners have access to on-site amenities.

Property Summary

Property Type | Single Family

Title | Freehold (No Lease)

Neighbourhood | Tower Ranch

Parking | 3 Car Garage

Bedrooms | 3 + Den

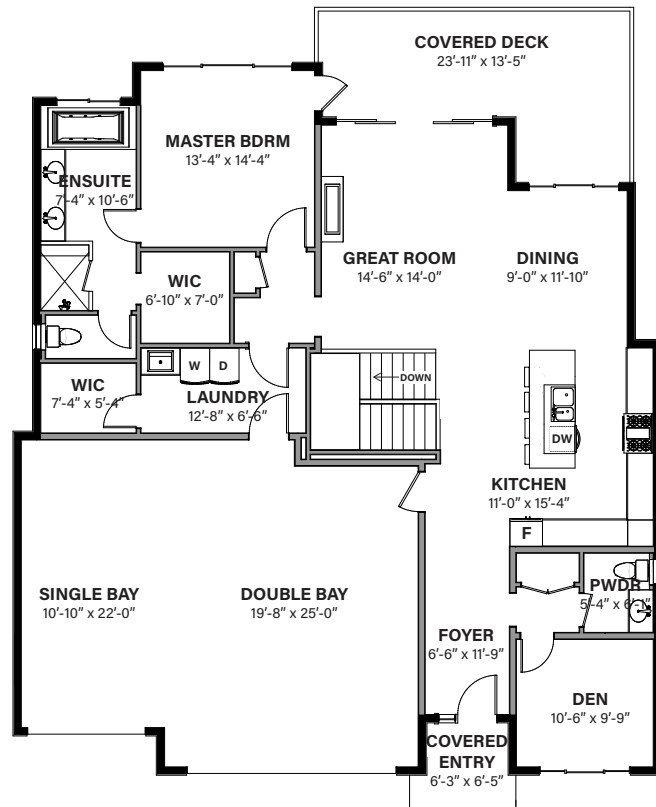
Bathrooms | 2.5

HOME FEATURES

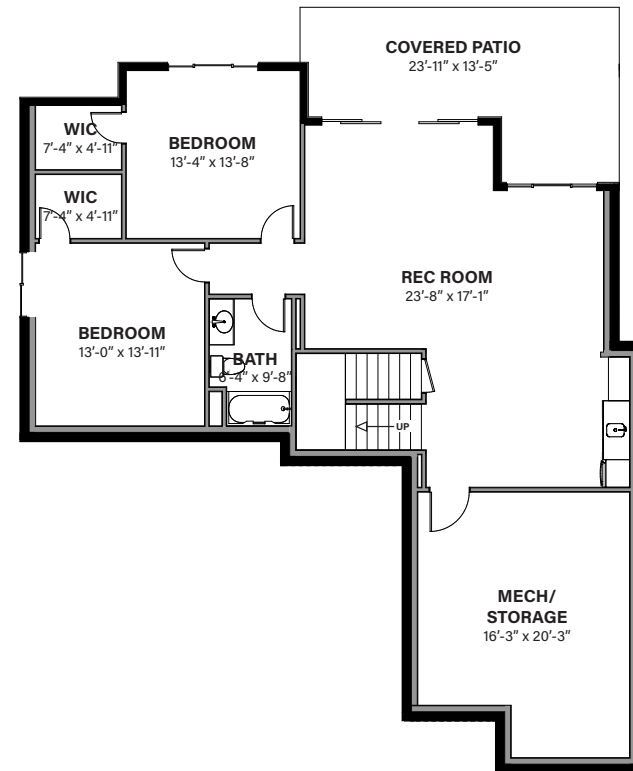
WE THINK THAT YOU'LL LOVE

- Beautiful mountain views
- Main level living featuring the great room, master bedroom and ensuite, powder room and den
- Entertainment-style kitchen
- Quartz countertops in kitchen, ensuite, powder room and bar
- Triple car garage
- Laminate flooring in main living spaces
- Carpet in bedrooms and on the stairs
- Heated tile floor in the ensuite
- Rough in for gas BBQ
- Floor to ceiling 2 toned tiled gas fireplace
- Built in electric car charger

BUNGALOW WALK-OUT IN THE HEART OF THE OKANAGAN.



Main Level



Walk-Out Level

MAIN LEVEL | 1642 SQ. FT.

WALK-OUT LEVEL | 1183 SQ. FT.

TOTAL | 2825 TOTAL SQ. FT.

In a continuing effort to improve our product offering, we reserve the right to modify or change the floor plans and specifications without notice. Floor plans are conceptual marketing drawings only. All dimensions and sizes are approximate. E&OE.

Interior Selections

Two-Toned
Fireplace Tile



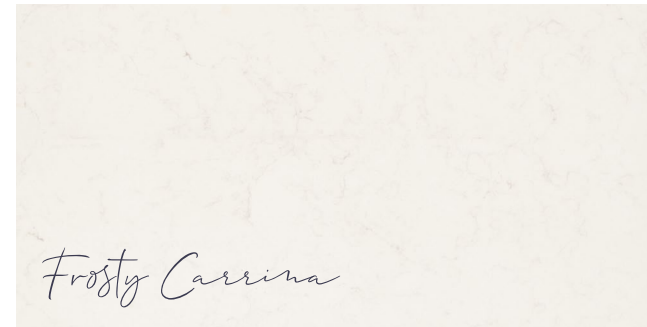
Ensuite Tub
Lighting



Kitchen Cabinets



Caeserstone
Quartz Countertop



Ensuite Floor and
Shower



Kitchen Island



Tierra Sol Crystal
Bar Backsplash



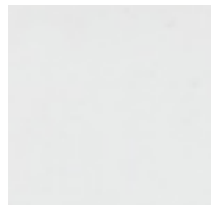
Torly's Avenue
Laminate Flooring

Samples shown are representational, for marketing purposes only. We reserve the right to modify and change specifications without notice. E&OE.

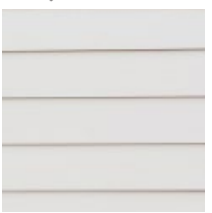
Exterior Selections



IKO Shingles in "Driftwood"



Gutter/Fascia
Gentek - "Arctic White"



Hardie Siding
"Arctic White"



Steelcraft Garage
"Charcoal"



Pro-Fit Ledgestone
"Black Rundle"

Samples shown are representational, for marketing purposes only. We reserve the right to modify and change specifications without notice. E&OE.

OKANAGAN STYLE FROM EVERY ELEVATION.



Front Elevation

FRONT ELEVATION | EAST FACING

REAR ELEVATION | WEST FACING



Rear Elevation

Elevation renderings are representational, for marketing purposes only. We reserve the right to modify and change specifications without notice. E&OE.



Additional details are available.

**SALES AMBASSADOR
CHRISTY SHAUGHNESSY**

250-258-7608
towerranch@dilworth.ca