



KUIPERS PEAK

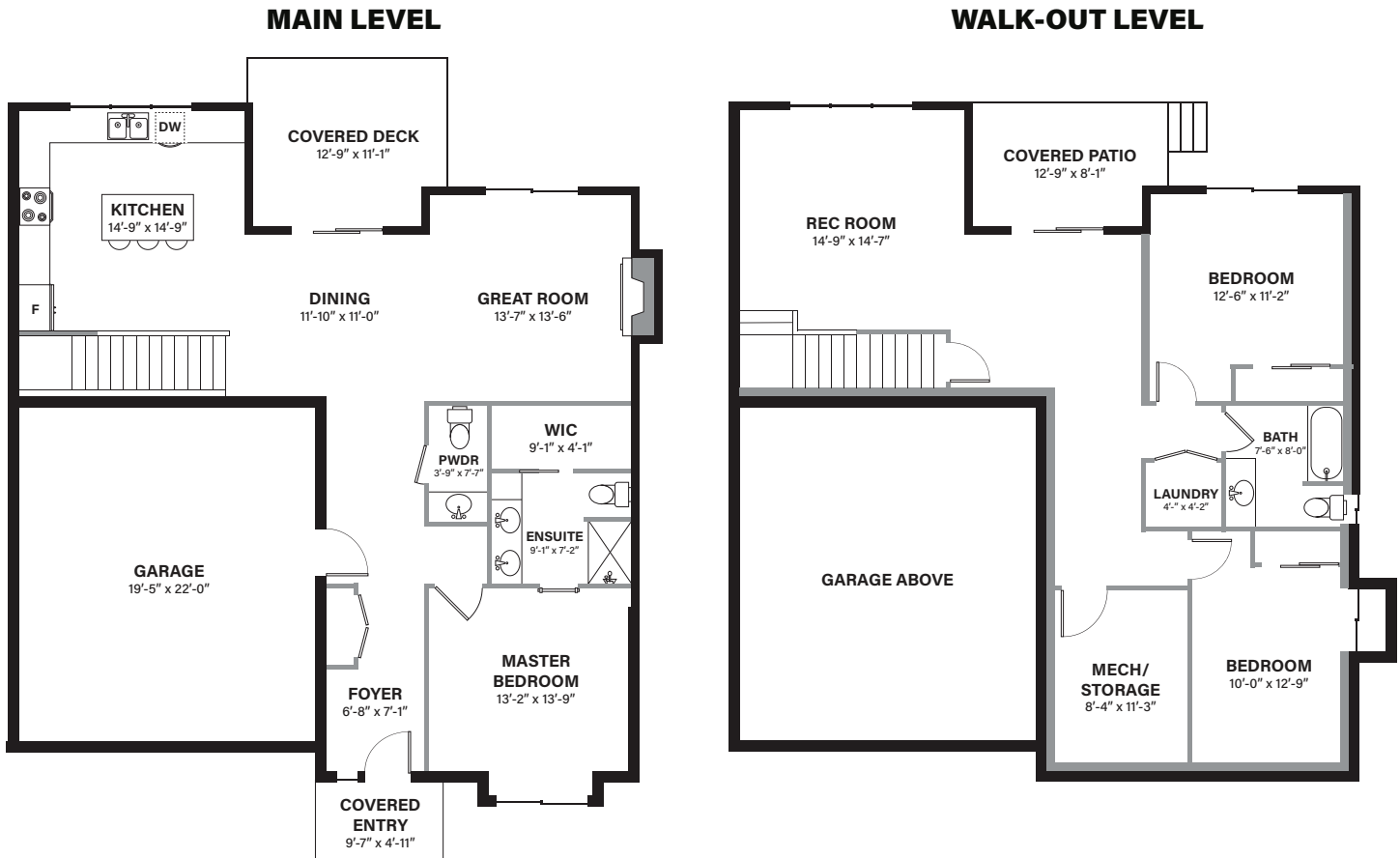
UNIT 1 - 796 KUIPERS CRESENT

Features

3 BEDROOM | 2.5 BATHROOM

MAIN LEVEL 1191 SQ.FT. | WALK-OUT LEVEL 942 SQ.FT.

LIVING SPACE | 2133 SQ.FT.



HOME FEATURES WE THINK YOU'LL LOVE

- AMAZING VIEWS
- L-SHAPED KITCHEN
- QUARTZ COUNTER TOPS
- MATTE BLACK FIXTURES
- BUILT IN WET-BAR

PRICED AT

\$957,500

In a continuing effort to improve our product, we reserve the right to modify or change the plans and specifications without notice. Floor plans are conceptual marketing drawings only. All dimensions and sizes are approximate. E&OE.