

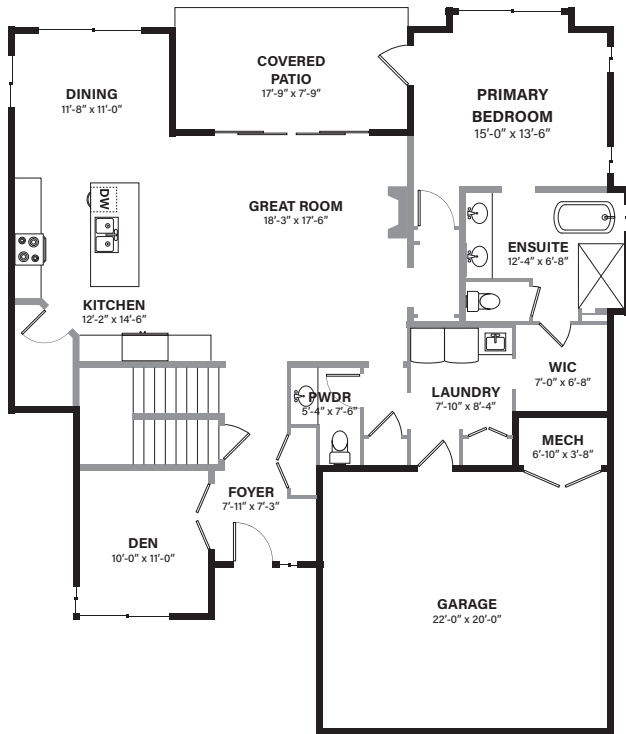


THE STIRLING

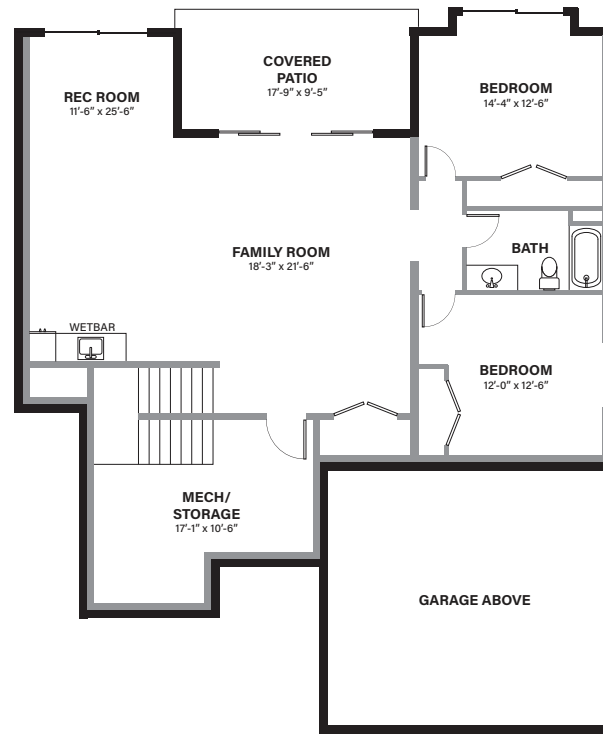
5 BEDROOM | 3.5 BATHROOM

MAIN LEVEL 1644 SQ.FT.
 UPPER LEVEL 576 SQ.FT.
 WALK-OUT LEVEL 1356 SQ.FT.
LIVING SPACE 3576 SQ.FT.

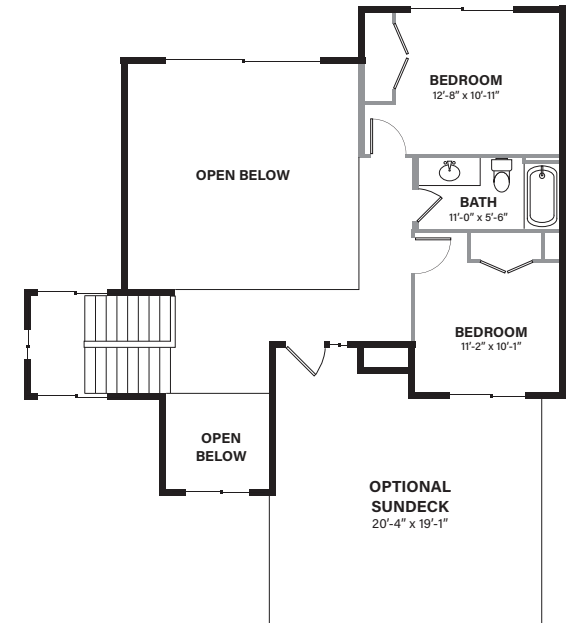
MAIN LEVEL



WALK-OUT LEVEL



UPPER LEVEL



In a continuing effort to improve our product, we reserve the right to modify or change the plans and specifications without notice. Floor plans are conceptual marketing drawings only. All dimensions and sizes are approximate. E&OE.