

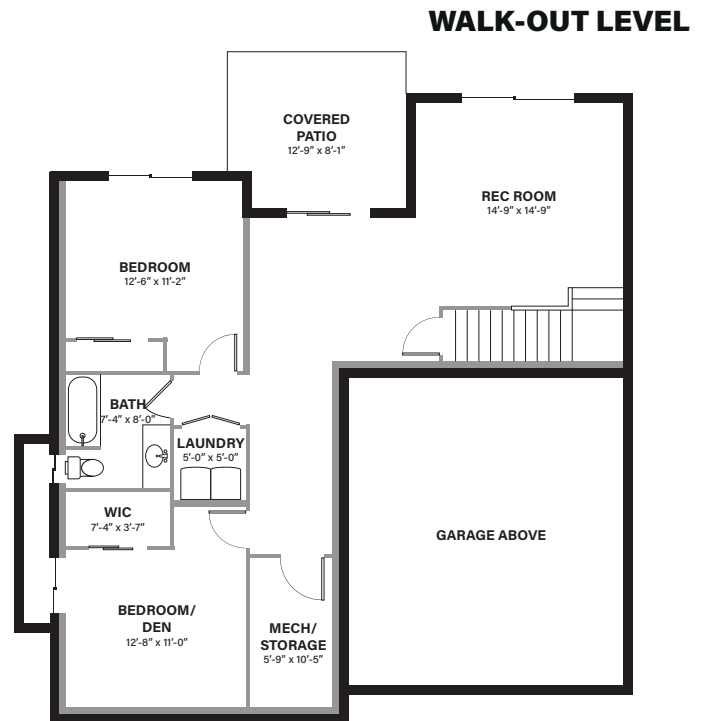
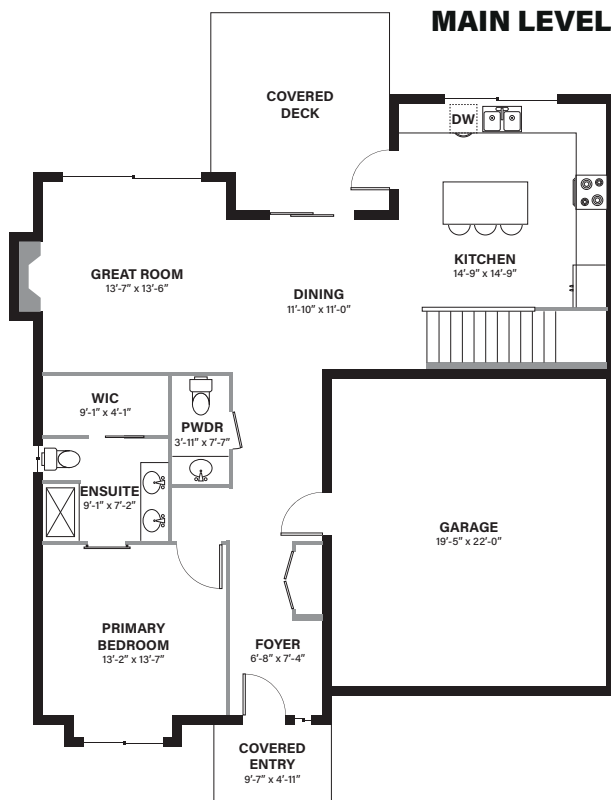
# THE KITIMAT

## FEATURES

**3 BEDROOM | 2.5 BATHROOM**

**MAIN LEVEL 1187 SQ. FT. | WALK-OUT LEVEL 937 SQ. FT.**

**LIVING SPACE | 2124 SQ. FT.**



## HOME FEATURES WE THINK YOU'LL LOVE

- LARGE L-SHAPED KITCHEN
- 4-PIECE ENSUITE BATHROOM
- COVERED PATIO AND COVERED DECK
- SPACIOUS REC ROOM
- VIEWS OF THE THOMPSON FLATS

**KUIPERS PEAK**  
**796 KUIPERS CRESCENT**

In a continuing effort to improve our product, we reserve the right to modify or change the plans and specifications without notice. Floor plans and renderings are conceptual marketing drawings only. All dimensions and sizes are approximate. E&OE.

# THE PAVILION

## FEATURES

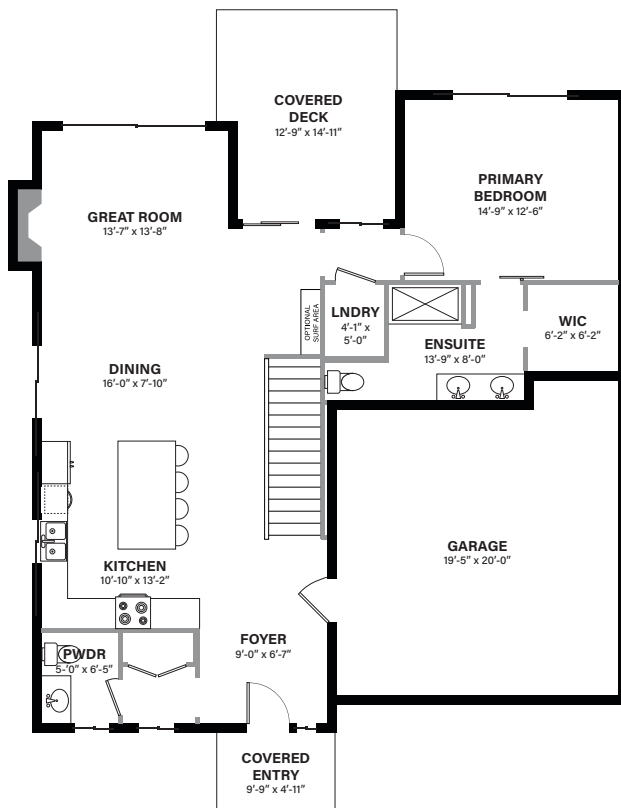
3 BEDROOM | 2.5 BATHROOM

ENTRY LEVEL 1219 SQ. FT. | WALK-OUT LEVEL 1019 SQ. FT.

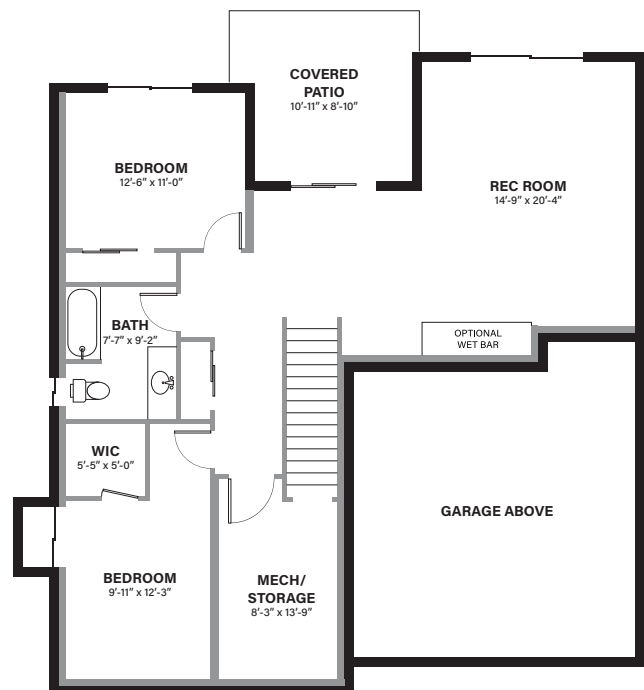
LIVING SPACE | 2238 SQ. FT.



MAIN LEVEL



WALK-OUT LEVEL



## HOME FEATURES WE THINK YOU'LL LOVE

- L-SHAPED KITCHEN
- MAIN LEVEL LAUNDRY
- 4-PIECE ENSUITE BATHROOM
- LARGE REC ROOM
- COVERED DECK AND COVERED PATIO

**KUIPERS PEAK**  
796 KUIPERS CRESCENT

In a continuing effort to improve our product, we reserve the right to modify or change the plans and specifications without notice. Floor plans and renderings are conceptual marketing drawings only. All dimensions and sizes are approximate. E&OE.

# THE KOOCANUSA

## FEATURES

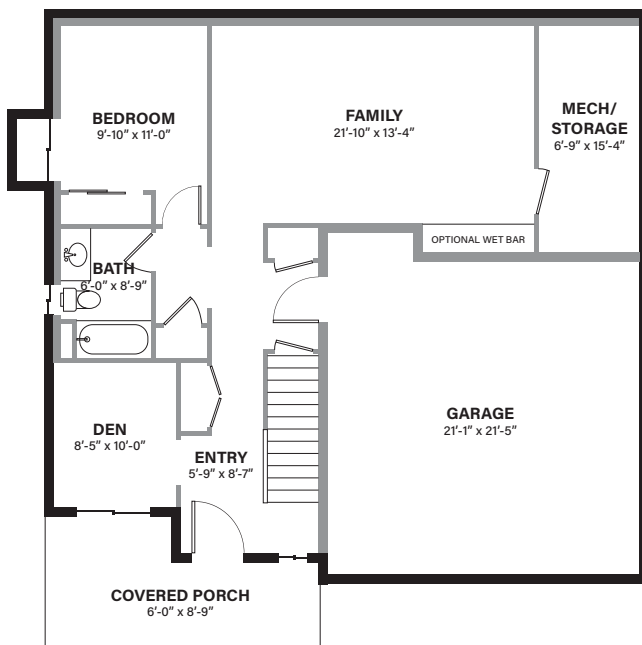
3 BEDROOM | 3 BATHROOM

MAIN LEVEL 863 SQ. FT. | WALK-UP LEVEL 1483 SQ. FT.

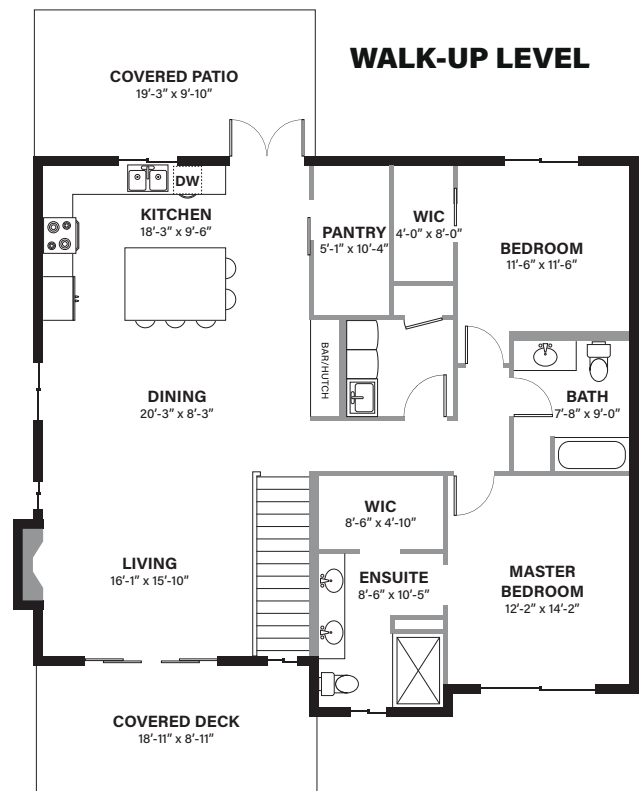
LIVING SPACE | 2346 SQ. FT.



**GROUND LEVEL**



**WALK-UP LEVEL**



## HOME FEATURES WE THINK YOU'LL LOVE

- BEAUTIFUL VIEWS
- L-SHAPED KITCHEN WITH ISLAND
- COVERED DECK, PATIO, AND PORCH
- 4 PIECE ENSUITE BATHROOM
- LARGE GROUND LEVEL FAMILY ROOM

**KUIPERS PEAK**  
796 KUIPERS CRESCENT

In a continuing effort to improve our product, we reserve the right to modify or change the plans and specifications without notice. Floor plans and renderings are conceptual marketing drawings only. All dimensions and sizes are approximate. E&OE.